

**CRYOGENIC VACUUM JACKETED
SHUTOFF VALVES**

CV3 SERIES

0 - 275 PSIG



APPLICATIONS

- Cryogenic Storage Tanks
- Cryogenic Transportation Trailers
- Cryogenic Vacuum Jacketed Transfer Systems (Point of Use Shutoff)

OPTIONS

- Cold Box Cuff
- Ported Bonnet (Overseat Purge)
- Pneumatic and Electric Actuators
- Positioners & Position Indicators
- Limit Switches
- Non-Jacketed



FEATURES

- Vacuum Jacketed (Insulated with Four Layers of Radiation Shielding)
- Bubble Tight Shutoff
- Redundant Packing Seals
- Compact Size
- High Efficiency
- Self Centering Plug
- Low Intitial Cost
- Easy Inline Maintenance
- Butt Weld Ends

Tests:

External Leakage Mass spec. to 1x10⁻⁹scc
GHe/sec
Seat Leakage Bubble Tight to 150 PSIG
Proof Pressure 300 PSIG



TECHNICAL DATA

Operating Ranges:

Temperature..... -452° F to +300° F
(-269° C to +149° C)
Max. Operating Pressure 275 PSIG
Heat Leak 4.5 BTU/Hr to
20°K (1.3 watts)

Materials of Construction:

All Major Structural Components are 300 Series Stainless Steel
Bonnet Brass/Nickel Plated
Seat Kel-F
Packing & Seals Teflon
Gasket Glass Filled Teflon

Valve Size:

1/2"



CV3 SERIES 0 to 275 PSIG

ORDERING GUIDE

CV3 - 084 - C WPG 1 M - NJ

BASE MODEL NUMBER
CV3 Series

VALVE SIZE
083 - 3/8"
084 - 1/2"
086 - 3/4"

CLEANING
O - Oxygen (per 216-2 specification)
C - Standard

CONFIGURATION
WPG - Weld Pipe, Globe
WTG - Weld Tube, Globe
WPR - Weld Pipe, 90o Angle Pattern
WTR - Weld Tube, 90o Angle Pattern
WPY - Weld Pipe, 45o "Y" Pattern
WTY - Weld Tube, 45o "Y" Pattern

SOFT GOODS KIT includes:

Packing
Gaskets
Seat
Hermetic Seals

SPECIAL ADD ON

CB - Cold Box Cuff
NJ - Non-Jacketed
TW - Complete Top Works Kit
SG - Soft Goods Kit

TOP WORKS

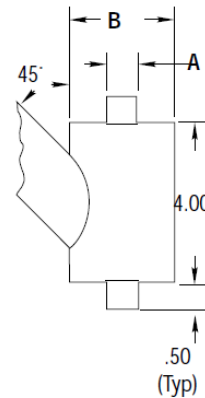
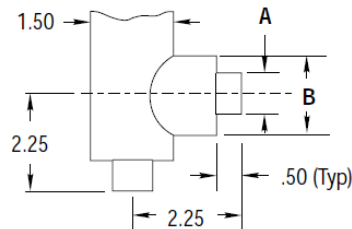
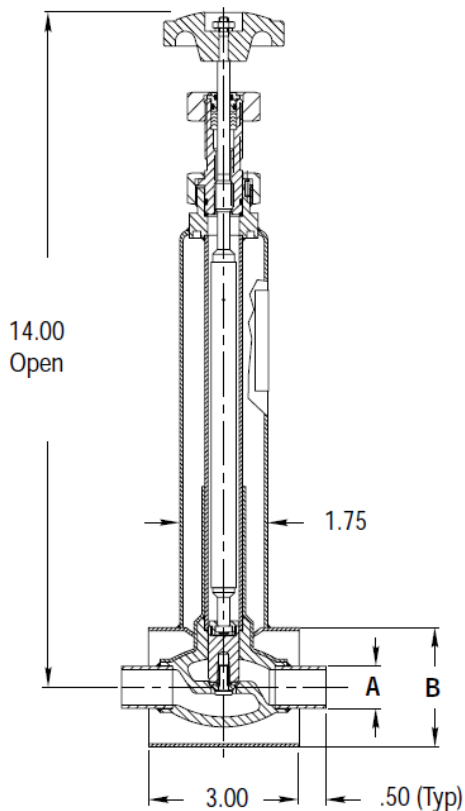
M - Manual
A - Automatic Valve - specify Actuator
B - Automatic Valve w/AutoSeal Actuator
E - Automatic Valve w/Control Tip - EQ% - specify Actuator
L - Automatic Valve w/Control Tip - Linear, specify Actuator
H - Automatic Valve w/Hyperbolic Tip - specify Actuator

PACKING

1 - Teflon



DIMENSIONS & PERFORMANCE DATA



Assembly Part Number	083	A* 084	086	B	Flow C _v	Heat Leak (watts)
Globe	.68	.84	1.05	2.38	5.9	1.3
Angle	.68	.84	1.05	1.50	6.8	1.3
"Y"	.68	.84	1.05	2.38	6.2	1.3

* Adapters available for tube sizes

Valve supplied with quick opening plug unless otherwise specified.